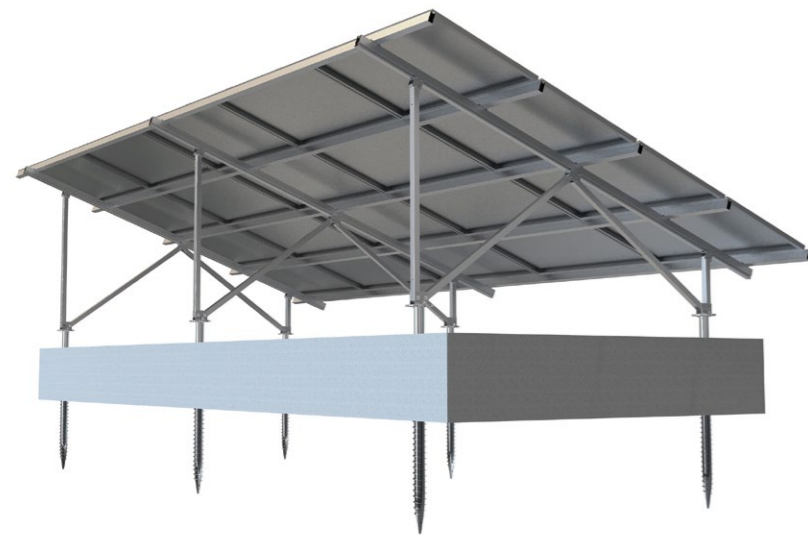


# Aluminium Ground Mounting



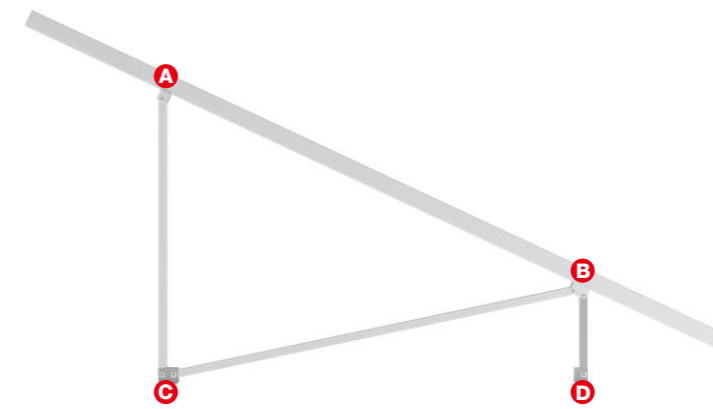
## Standard Ground Mounting System

Aluminum ground mount, optimized for lightweight, quick and efficient installation with flexible on engineering upon site conditions. Optional on foundation by ground screw or concrete. Maximize pre-assembled before shipment.

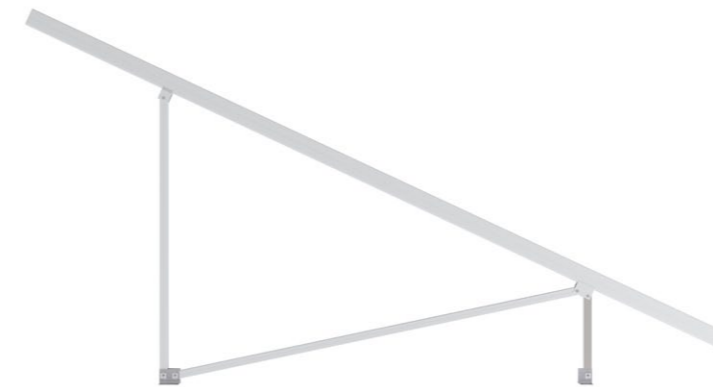
### Technical features:

Product name	Standard ground mounting system
Application	Flat concrete roof, open terrain
Inclination	Customized
Material	AL 6005-T5, SUS 304, Q235
Finish	AL 6005-T5 Anodized, Q235 Hot-dip galvanizing
Module orientation	Landscape or Portrait

## 1 Assembly



Ground mounting system has been maximize pre-assembly before shipment, which make it install more convenient.



N-Type

W-Type

## 2 Assembly



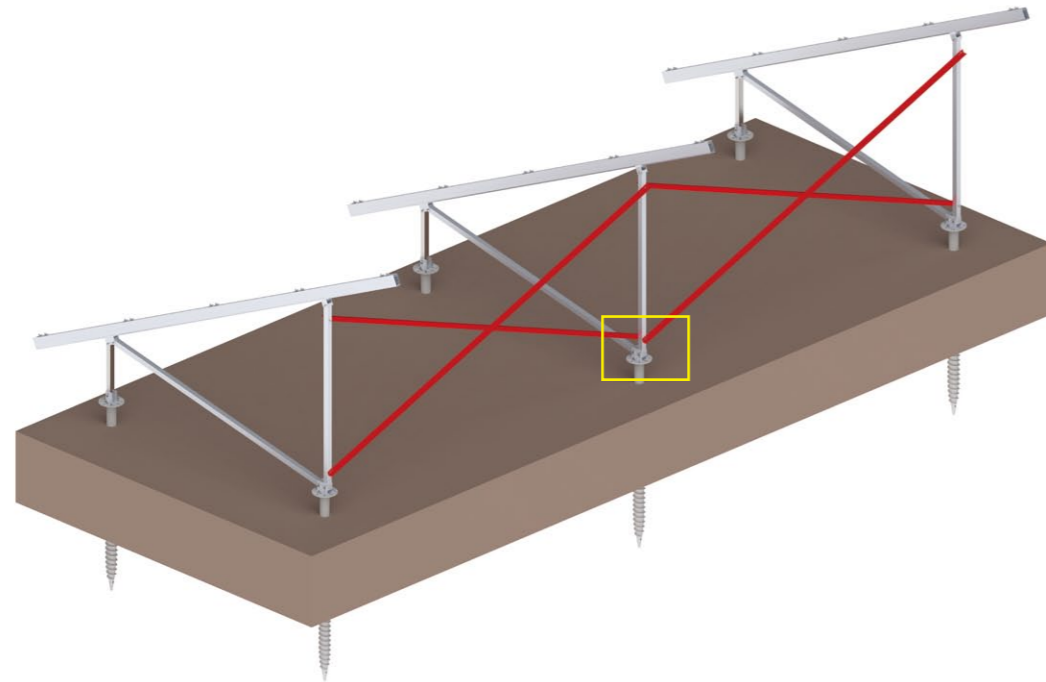
Depending on the different design conditions, pre-assembly support are generally designed into the following two shapes:

The N-Type pre-assembly support is mainly used for the small wind & snow load condition projects. (2-4 columns)

The W-type pre-assembly Support is mainly for the 4-5 columns wind & snow load condition projects. We will add cross support to make the structure stronger if the ground height is higher or wind & snow load is larger.

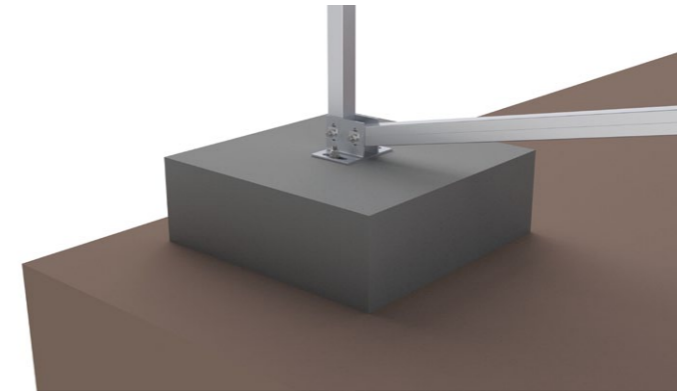
# Aluminium Ground Mounting

## 3 Cross

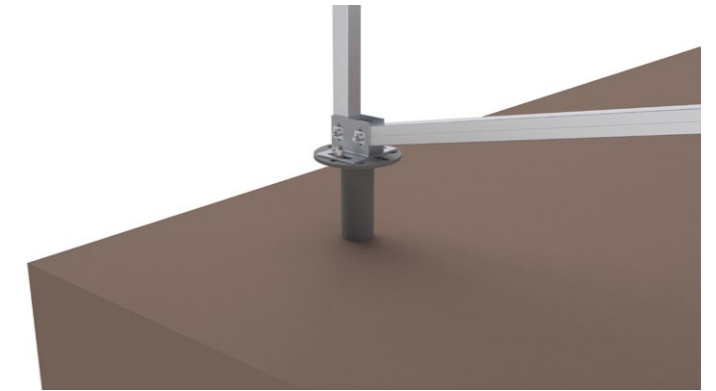


## 4 Foundation

Ground mounting system are commonly used for Concrete Foundation and Screw Foundation.



Concrete Foundation



Screw Foundation

Item	Concrete Foundation	Screw Foundation
<b>Applicable terrain</b>	Flat, Even Tilt, Ladder	
<b>Applicable geology (reference)</b>	Random	SWS3 ≤ N ≤ 10 SWS Test, cohesive soil 3 ≤ N ≤ 10
<b>Difficult or Easy Degree</b>	Complicated	Easy
<b>Cost</b>	Higher	Lower
<b>Adjustment range</b>	Not convenient to adjust the height of base	Larger
<b>Corrosion resistance</b>	Anti-Corrosion	Hot-dip galvanizing on the surface of the screw foundation, which has met the anti-corrosion requirements of the service life

Conventional pile compression and tensile strength reference values(KN)								
Ground Screw Length	N=3		N=5		N=7		N=10	
	Resistance	compression Resistance	Resistance	compression Resistance	Resistance	compression Resistance	Resistance	compression Resistance
1600	8.7	9.1	14.6	15.2	20.4	21.4	29.2	30.6
1800	9.9	10.2	16.5	17.1	23.1	24	33	34.4
2000	11	11.4	18.4	19	25.8	26.7	36.8	38.2
2200	12.2	12.5	20.3	21	28.4	29.4	40.6	42
2500	13.9	14.2	23.2	23.8	32.4	33.4	46.4	47.8

Remarks: The N value of the soil in this table are based on the Swedish penetration test (SWS).

**Creating the greatest value for you  
In worldwide**



**Wochn Green Energy Co.,Ltd**

Add: Xicen Building 349, Qingpu District, Shanghai,China

Tel:0086-21-39519802

Mob: 0086-15721481648

Email: sales@wochnmount.com

Web: www.wochnmount.com